

Castle valve



- Used for instance in listed buildings
- Polished, lacquered brass
- Pre-settable valve
- Temperature: 5°C to +100°C
- Pressure class: PN 10
- Dimension: 10-20

Description Castle valve

Area of use

The castle valve is used for instance in listed buildings or where there is a need to maintain an antique finish.

The castle handle and valve are made of polished, lacquered brass. The valve is manually adjusted with the handle, which can also be fitted to valves and replacement inserts in the rest of the MMA range.

Description

The castle valve unit consists of pre-settable valve and throttle handle that can be operated as a handwheel.

Elbows and nuts, as well as return valves and tails are available as accessories.

The FV valve range offers a very precise pre-setting feature concealed under the stuffing box. See FV valve for more information.

The valve is available in a straight and angled design.

The RV return valve is fitted with a spindle that is used to close and pre-set the valve.

See RV valve for more information.

The return valve is available in a straight and angled design.



Description Castle valve

Pre-setting FN 2 key

The valve is equipped with an insert which has concealed pre-setting functionality.

Unscrew the protective cap. Remove the stuffing box with the pin (use the tip of the FN2 pre-setting key).

Insert the pre-setting key with the serrated end in the control sleeve and screw it carefully to the bottom (clockwise).

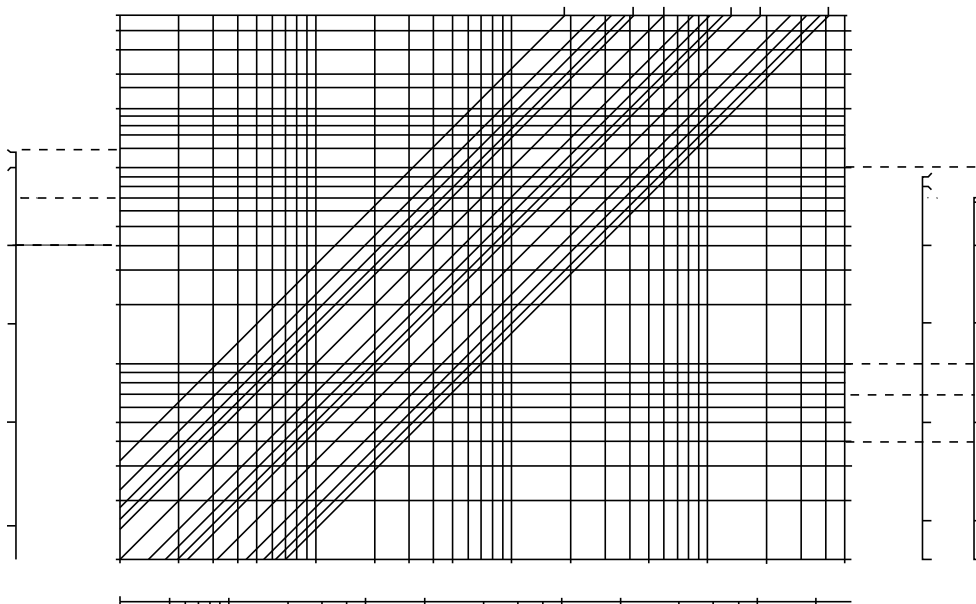
Screw up the number of turns outlined in the diagram.

Refit the stuffing box with the pin.



Pre-setting FV5

- Remove the protective cap and the stuffing box as outlined above.
- Screw the control sleeve to the bottom as outlined above.
- Remove the pre-setting key and fit the pre-setting tool on top of the insert splines, and reinsert the pre-setting key in to the tool.
- Reset the scale to the index mark.
- Screw up the control sleeve until the required kv value coincides with the index mark.
- Refit the stuffing box with the pin.



Technical data **Castle valve**

Pressure class

PN 10

Min. temperature

5°C

Max. temperature

100°C

Recommended differential pressure

3-10 kPa

Kv value (pre-set value) with throttle handle

DN 10-15 0.01-0.7/0.01-1.2

DN 20 0.01-0.9/0.01-1.2

Kvs value (max. capacity)

DN 10-20 1.2

Material

Brass

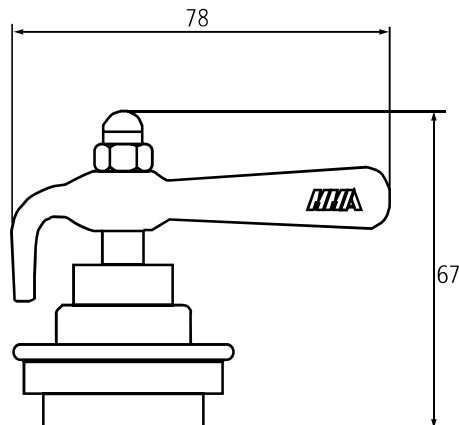
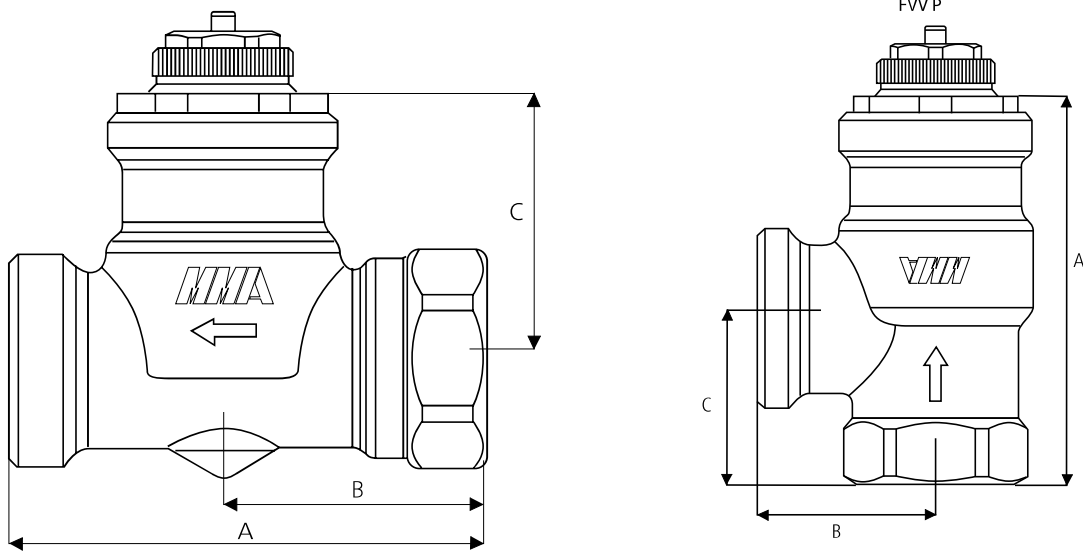
Gaskets EPDM



Product details Castle valve

Dimensions

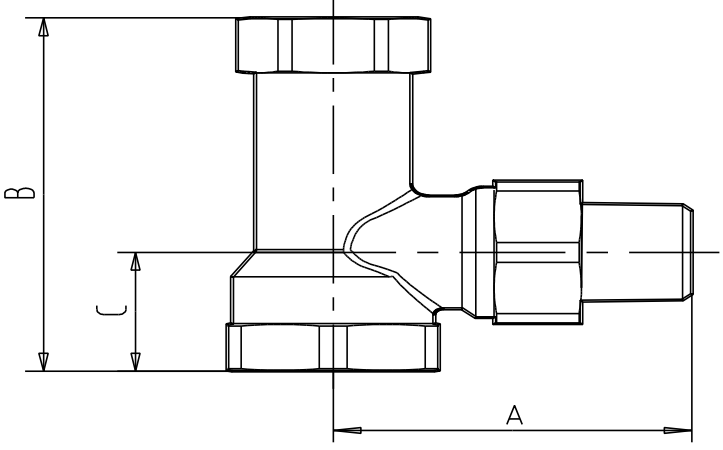
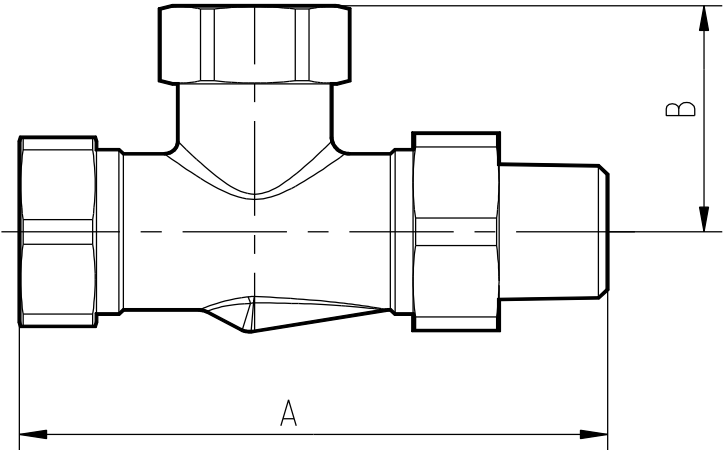
	A	B	C	Weight
FVR 10 P	51	29	33	172 g
FVR 15 P	58	32	33	218 g
FVR 20 P	68	35	30	268 g
FVV 10 P	54	23	21	150 g
FVV 15 P	57	26	24	202 g
FVV 20 P	63	31	28	268 g



Product details Castle valve

Dimensions

	A	B	C	Weight
RVR 10 P with tail	74	31		136 g
RVR 15 P with tail	85	33		212 g
RVR 20 P with tail	100	43		384 g
RVV 10 P with tail	47	48	20	109 g
RVV 15 P with tail	55	54	24	190 g
RVV 20 P with tail	64	64	28	324 g



Product details Castle valve

Ordering codes

Article number	Designation	Description
FD4R9000200X00SE0	SNH	Throttle valve
FDJV30010AAX00SESPOLI	FVR 10 P	Valve straight
FDJV30015AAX00SESPOLI	FVR 15 P	Valve straight
FDJV30020AAX00SESPOLI	FVR 20 P	Valve straight
FDJV30010ABX00SESPOLI	FVV 10 P	Valve angle
FDJV30015ABX00SESPOLI	FVV 15 P	Valve angle
FDJV30020ABX00SESPOLI	FVV 20 P	Valve angle
FD8C40010NBX00SESPOLI	N10B P	Elbow and nut
FD8C40015NBX00SESPOLI	N15B P	Elbow and nut
FD8C40020NBX00SESPOLI	N20B P	Elbow and nut
FDIF20010AAX00SESPOLI	RVR 10 P	Return valve straight
FDIF20015AAX00SESPOLI	RVR 15 P	Return valve straight
FDIF20020AAX00SESPOLI	RVR 20 P	Return valve straight
FDIF20010ABX00SESPOLI	RVV 10 P	Return valve angle
FDIF20015ABX00SESPOLI	RVV 15 P	Return valve angle
FDIF20020ABX00SESPOLI	RVV 20 P	Return valve angle
FD8C40010NTX00SESPOLI	N10R P	Tail and nut
FD8C40015NTX00SESPOLI	N15R P	Tail and nut
FD8C40020NTX00SESPOLI	N20R P	Tail and nut
FD8C9000100X00SESDZR	1/2" 15K15	Combo fitting 15 mm
FD8C9000200X00SESDZR	3/8" 12K12	Combo fitting 12 mm



We reserve the right to alter information without notice