

Motorised actuator MOVE



- Easy to mount
- Protection class: IP 54
- Manually adjustable
- Consumption: 1,4W

Description *MOVE*

Area of use

Motorised actuator MOVE for controlling valves with M28x1,5 or M30x1,5 connection.
For controllers with continuous output (0-10V) in conjunction with single-room control systems.

Description

Motorised actuator MOVE with high force suitable for valves with M28x1,5 and M30x1,5 connection.

The actuator is a motor actuator that adjusts the valves steplessly.

The actuator sets itself on the correct stroke to the respective valve, between 2-8.5mm

Start-up

The actuator makes a valve calibration when it is energized.

It finds the closing mode and then the maximum position, then the actuator increases and decreases quickly to find the valve spindle stroke.

If it does not detect the stroke of the valve, the actuator will use a stroke of 8.5mm.

If the actuator loses power or receives a reduced voltage, a new calibration will be made.

The calibration is done in about 15 minutes



Technical data *MOVE*

Technical data

Operating voltage

24V AC, -10%... +20%, 50-60Hz

24V DC, -20%... +20%

Operating power

2,6 VA/ 1,4 W

Max power consumption

< 110 mA

Standby power consumption

< 10 mA

Feedback Signal

100 k Ω

Signal

Volt 0V... 10V DC

Power 1 mA Load impedance 10 k Ω -1000 k Ω

Resolution 0,1 V

Stroke

Standard Max 8,5mm

Force

Standard 125 N -20/+20%

Regulating time

Standard 30s/mm

LCD (H x W)

10 x 20 mm, with optional blue backlight

LED

Multicolored - LED

Storage temperature

-20°C till +70°C

Ambient temperature

0°C till + 50°C

Degree of protection

IP 54

Protection class

III

CE

EN 60730

Casing

Material Polyamide

Color light grey (RAL 7035), from 2016 white (RAL 9003)

Casing cover

Material Polycarbonade

Color Transparent

Cabel

Type 3 x 0,22 mm² PVC

Color white

Length 1m

Weight with cable

155 g

Weight without cable

130 g

Surge enl EN 60730-1

1 kV



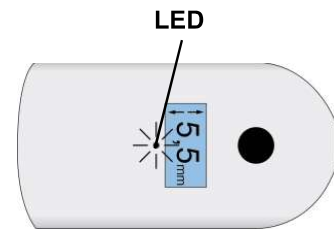
Technical data *MOVE*

Technical data

LED-display

The motorised actuator MOVE is equipped with a multi-coloured LED for the signalling of operating statuses.

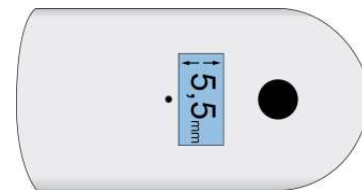
Green and red are used as signal colours. Signalling is only performed if the valve drive is supplied with operating voltage. Error conditions are indicated with steady red light.



LC-display

The motorised actuator MOVE alternately shows the setting position and the applied control voltage. In case of a control requirement, the current driving direction is shown in the LC display by means of an arrow.

In case of an error, the corresponding error code is shown and the error is indicated by a steady lighted LED.



NOTE! The mechanical play between actuator and valve adapter and the gear in the actuator is recognized as valve travel. This affects the position indicator and the control bandwidth is minimally reduced. In contrast to the actual valve stroke, thus an approx 1 mm higher valve stroke is shown in the display.

Error codes

Queued errors are indicated by an error code. The subsequent table explains the different error codes and error corrections.

Error code	Description	Error correction
E6	Irregular position is determined	The actuator has to be disconnected from the power supply and the control shaft must be moved with the manual setting from the end position. After the power resumes, the initialization starts again. If the error recurs, the customer service is to be called.
E8	Indicates an internal error	The actuator will perform a re-initialization after 10 seconds. If the error cannot be corrected automatically after a maximum of three attempts, there is a permanent error displayed. In this case, the customer service is to be called.

Tekniska data *MOVE*

Function

The motorised actuator MOVE is performed by a 0-10 V DC control signal from a room thermostat or a building management system. After switching on the power supply, the actuator initializes. In the initialization of the actuator determines the mechanical stroke of the actuator. In this period the display alternately shows "In" (for initialization) and the control voltage applied to.

First, the valve pressure plate is fully retracted, whereby the upper end-stop of the drive is determined. Following the valve plate extends fully and determined the bottom end stop. the closing point of the valve is detected. Now the valve stroke recognition will happen.

Therefore the actuator moves with high speed to the upper position and back to the lower position slowly, for determining the valve stroke. In case of not sensing the valve, the actuator will work with the factory setting stroke (8,5 mm)

The stroke of the valve can be changed in practice by different conditions. The valve was adjusted, or the actuator was mounted to a new valve. In both cases, the data obtained at the initialization values has changed. Thus, the actuator adjusts to the new valve stroke, the power supply and the control voltage must be interrupted briefly.

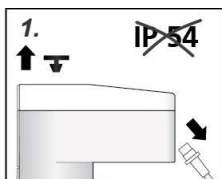
After the power has been switched on again, the actuator performs a new initialization phase.

NOTE! For initialization Move needs max. 15 minutes

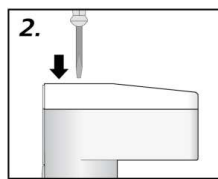
The motorised actuator MOVE is performed by a 0-10 V DC control signal from a room thermostat or a building management system. The control signal allows a precise activation and positioning of the actuator. A 0-10 V or PWM signal can be applied to the control voltage input for control purposes.

Manuel Valve Setting

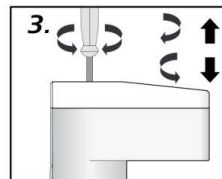
The manual valve setting allows to bring the valve pressure plate to the desired position in de-energised status. This facilitates e.g. maintenance and installation.



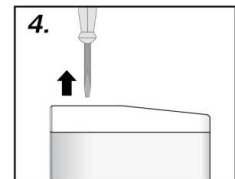
1. Remove the protective plug and the connection line, or switch off the voltage supply.



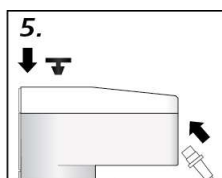
2. Insert a screwdriver (0,3 x 2 mm).



3. Turn to the right or left for extracting or retracting, respectively.



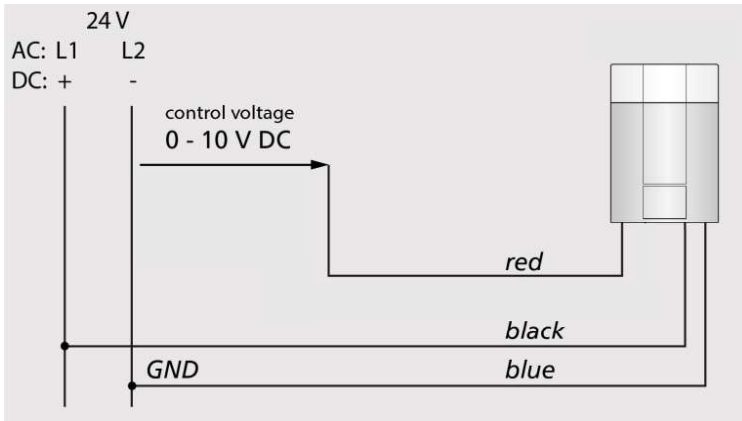
4. Remove the screwdriver after reaching the desired position.



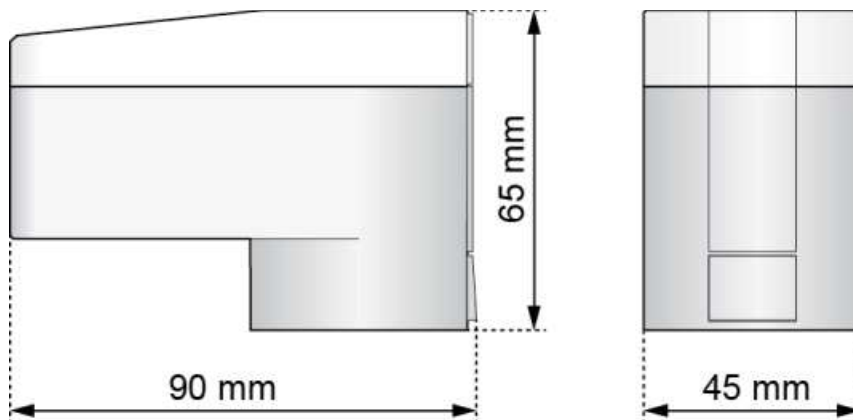
5. Install the protective plug and connect the connection line.

Technical data *MOVE*

Connection line



Measurements



Ordering codes

Article number	Designation	Description
4038901	MOVE 0-10V	Incl adapter M28x1,5 and M30x1,5

We reserve the right to change the products without prior notice