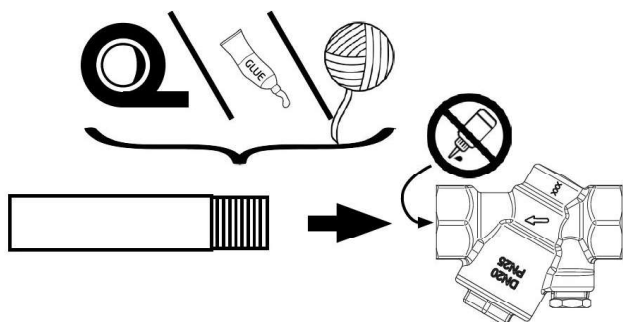


Purmo Group Sweden AB
Tel. +46 (0)433 737 00

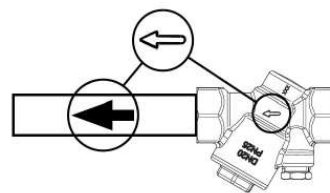
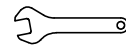
4 8282 170
201112 rev.0



2 Montering Mounting

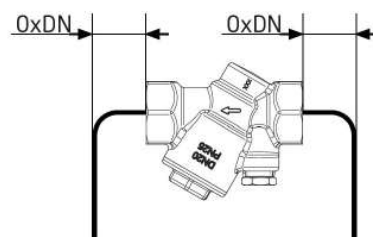


1 Positionering Positioning



Ventilen monteras i flödesriktning.

Mount the valve in the direction of the flow



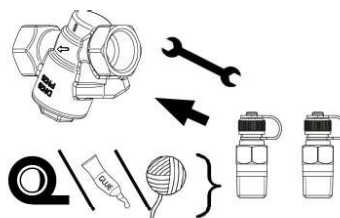
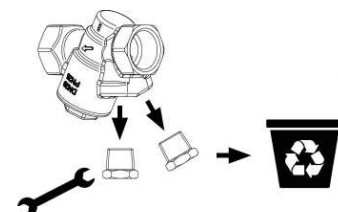
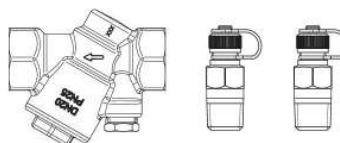
Ventilen kan monteras innan eller efter en böj.

The valve can be mounted before and after a turn.

3 Montering Mounting

Montera mätningarna.

Mount the measuring nipples.



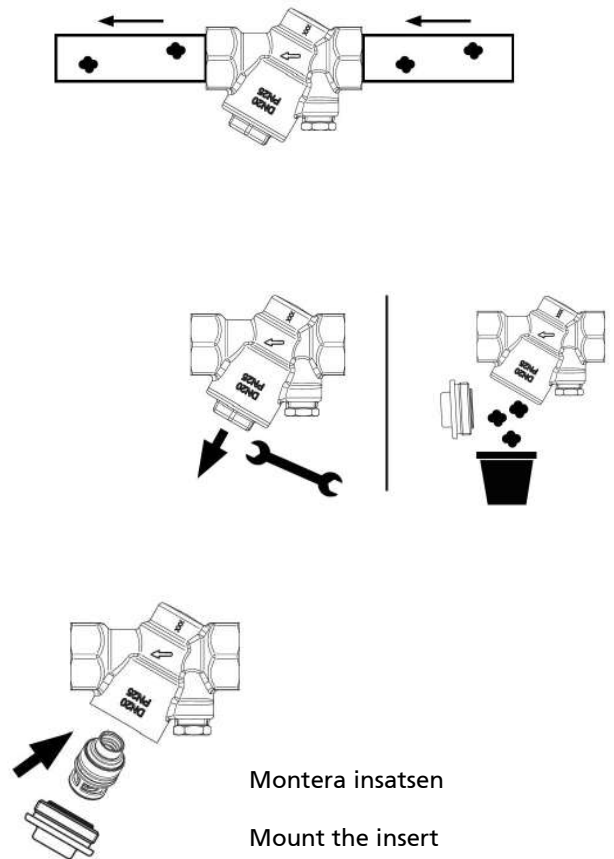
4

Montering insats Mounting insert

RSK-nummer	Beskrivning	Flöde l/h	Flöde l/s	Flöde gpm	Min. Δp kPa	Kv
489 35 41	Alpha insats typ 20	40	0,011	0,18	9	0,13
489 35 42	Alpha insats typ 20	60	0,017	0,26	12	0,17
489 35 43	Alpha insats typ 20	80	0,022	0,35	13	0,22
489 35 44	Alpha insats typ 20	105	0,029	0,46	14	0,28
489 35 45	Alpha insats typ 20	135	0,038	0,59	14	0,36
489 35 46	Alpha insats typ 20	180	0,050	0,79	14	0,48
489 35 47	Alpha insats typ 20	240	0,067	1,06	14	0,64
489 35 48	Alpha insats typ 20	310	0,086	1,36	14	0,83
489 35 49	Alpha insats typ 20	410	0,114	1,81	15	1,06

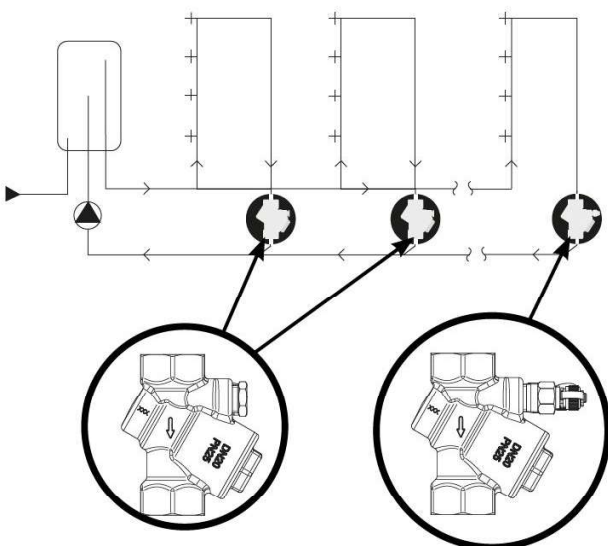
5

Montering insats Mounting insert



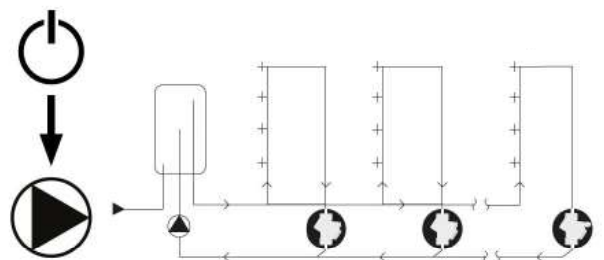
6

Montering Mounting



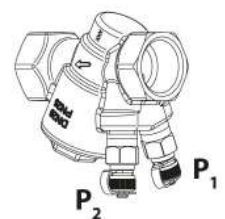
7

Montering Mounting

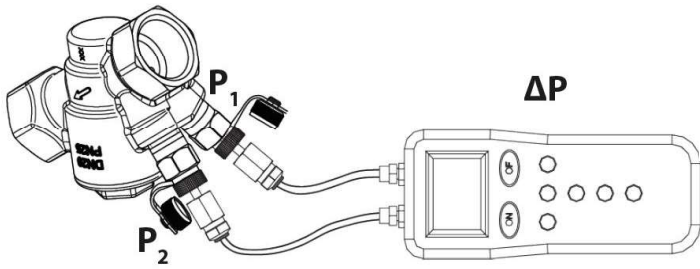


ΔP
kPa
bar
PSI

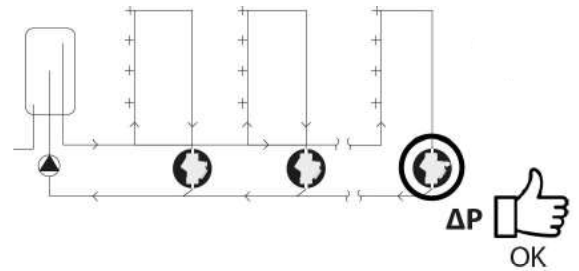
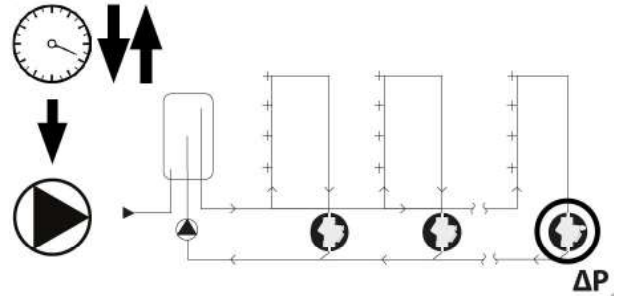
$$\Delta P = P_1 - P_2$$



8 Montering
Mounting



9 Montering
Mounting



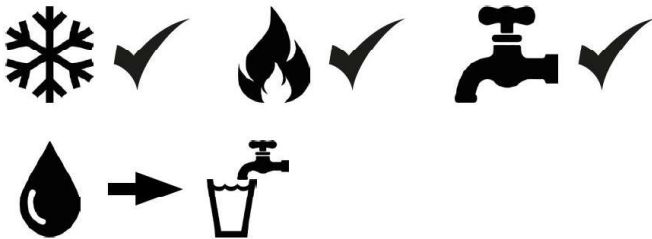
10 Montering
Mounting

PN25

-20°C 120°C

$\Delta P_{max} = 350kPa = 3.5 \text{ bar}$

$\Delta P_{max} = 51PSI$



11 Montering
Mounting



Säkerhets instruktioner:

Tillverkaren ansvarar inte för skador som uppstår till följd av användning annat än i den angivna manualen.

Sådan risk ligger helt hos användaren. Kontrollering av monteringsanvisningarna betraktas som del av den produkt som används.

