



Unisenza Plus:

smart controls that optimise energy efficiency and indoor climate comfort



Unisenza Plus controls

If we want to create a better future for ourselves, the next generations and the planet, we have to be smart about it. Smart heating solutions such as the Unisenza Plus wireless controls guide us towards an indoor climate that's both comfortable and future-proof.

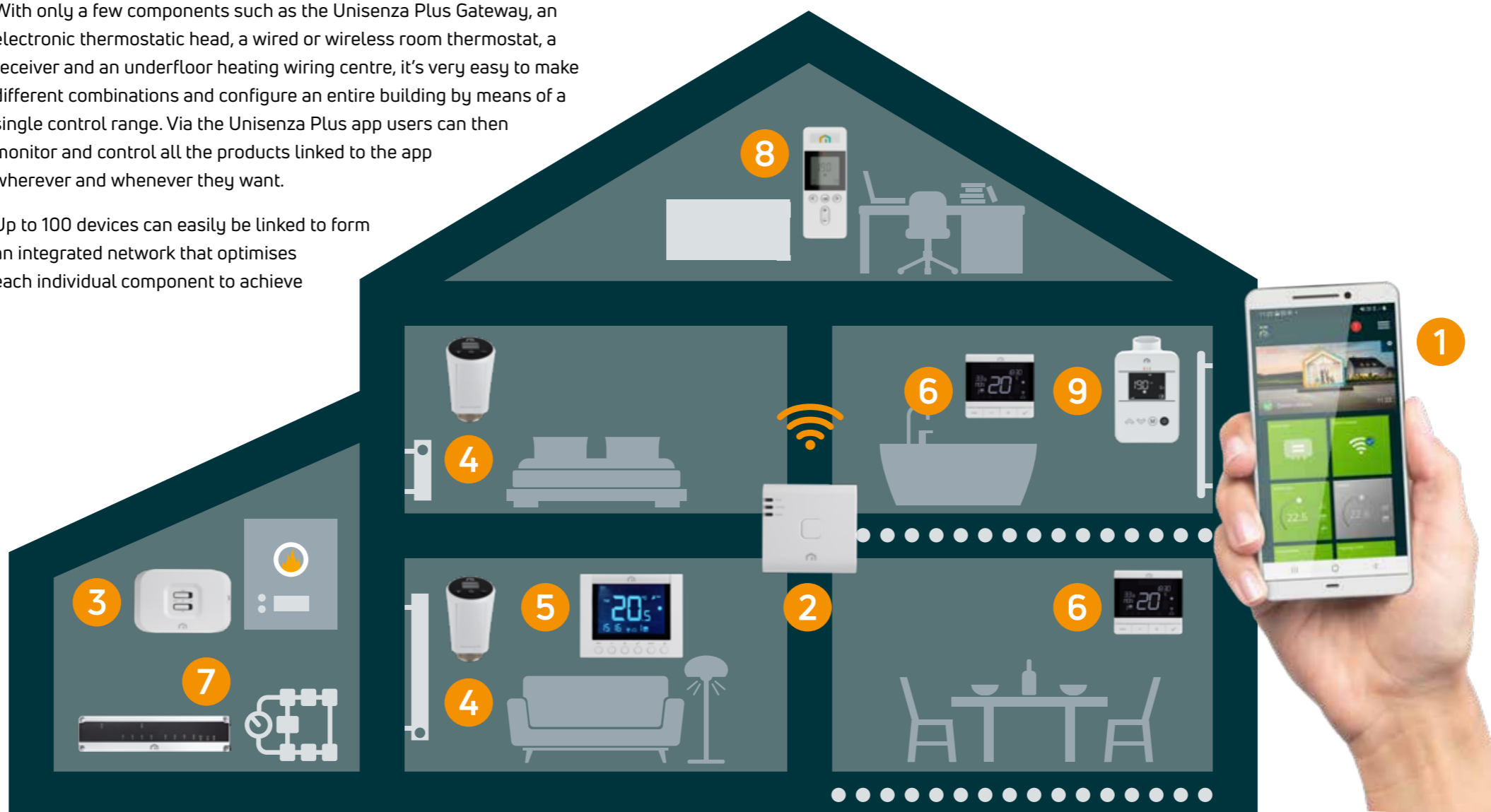
Unisenza Plus represents a smart HVAC system control solution that allows users to easily connect and control numerous heating and cooling devices at the touch of a button. Unisenza stands for a unique sense of comfort and efficiency, easily obtained with a complete, unified control solution. The Plus refers to the extended range of possibilities and compatible products, as well as the added value of a completely wireless network that allows for optimum flexibility in both new construction and renovation projects.

With only a few components such as the Unisenza Plus Gateway, an electronic thermostatic head, a wired or wireless room thermostat, a receiver and an underfloor heating wiring centre, it's very easy to make different combinations and configure an entire building by means of a single control range. Via the Unisenza Plus app users can then monitor and control all the products linked to the app wherever and whenever they want.

Up to 100 devices can easily be linked to form an integrated network that optimises each individual component to achieve

the ultimate in both performance and comfort:

- Future-proof range that uses the latest Zigbee 3.0 wireless technology
- Can be integrated as a complete solution from the start or gradually extended
- Modern, functional designs which fit a wide range of mounting requirements
- Simple, intuitive Unisenza Plus app that enables centralised comfort control and energy efficiency
- All our controls are planned to adhere to a standardised concept, which will allow all our app-controlled products to be controlled from the same user-friendly app.
- Possible to control multiple gateways and various buildings within the same app
- Creates an individual WLAN Mesh, even if there is no internet connection available
- 5-year warranty



6 ROOM THERMOSTATS



7 WIRING CENTRE RF



8 YALI PLUS RANGE



9 UHEC PLUS



Unisenza Plus Gateway

- Central link between devices and to the intuitive Unisenza Plus app
- Integration of the latest Zigbee 3.0 wireless technology
- Connects up to 100 end devices with the Unisenza Plus app
- Connectivity to smart home systems such as Alexa or Google Home
- Create and manage one or more comfort zones
- Easy cloud connection – connects multiple devices to the cloud through an Internet router with a WiFi or Ethernet cable connection

Unisenza Plus 2-Channel Receiver

- Receiver for wireless control of a boiler, pump and/or zone valves in a central heating system
- Two independent channels for controlling heating, cooling and/or a timer for domestic hot water
- Possibility to pair up to 16 ETHs with the receiver, e.g. to switch off pumps or boilers when valves are closed
- Coupling functions with the various Unisenza Plus thermostats, the electronic thermostatic head (ETH) and the wiring centre
- Integrated OpenTherm controller function with automatic OT/+ interface detection for integration with other OpenTherm devices

Unisenza Plus Electronic Thermostatic Head (ETH)

- Wireless ETH suitable for easy installation in new build and renovation projects to update the existing standard system
- Easy cloud-based control via an intuitive app on a smartphone thanks to the integration of the latest Zigbee 3.0 wireless technology
- Connectivity to smart home systems such as Alexa or Google Home
- In-app installation and diagnostics
- Standard 2x AA batteries – battery life > 2 years
- Geolocation – optional and flexible temperature management through presence detection

Unisenza Plus 2-Channel Thermostat

- Wireless room thermostat with Zigbee 3.0 protocol
- Two independent channels for controlling heating, cooling and/or time control for domestic hot water
- Coupling option to connect up to 6 ETHs to the thermostat and control them together via thermostat and/or app
- Coupling option with the 2-channel receiver
- Geolocation – optional and flexible temperature management through presence detection



Unisenza Plus Thermostats Wired

- Wired room thermostat for heating and/or cooling in 230V or 24V version
- Installation in standard flush-mounted box
- Ultra-slim design with a total depth of only 25 mm (the visible part on the wall is only 10 mm)
- Can be used with or without Unisenza Plus Gateway
- Geolocation – optional and flexible temperature management through presence detection

Unisenza Plus Thermostat RF

- Wireless room thermostat, for both new buildings and renovation projects
- Suitable for retrofitting existing surface heating and cooling systems
- Integrated battery that can be easily charged via a USB cable
- Ultra-slim design with a total depth of just 10 mm
- Integrated humidity sensor for dew point protection in cooling mode
- Easy wall mounting using an innovative wall bracket

Unisenza Plus Wiring Centre

- Wiring centre that can control up to 8 different RF room thermostats and 3 actuators per room thermostat
- Wireless connection between the RF room thermostats and wiring centre
- The channels can be assigned manually or via the Unisenza Plus app
- Enables heating and/or cooling
- Versatile application options such as controlling heat and cold generators, pump protection function, external dew point monitoring, etc.



Free app for more flexibility









Each of the Unisenza Plus products can easily be paired and linked to the Unisenza Plus Gateway to form an integrated network that is controllable via the intuitive Unisenza Plus app. With the app users can monitor and control all the linked heat transfer systems wherever and whenever they want. In other words, the HVAC system becomes more controllable and is very easy to adapt to daily habits.

Using the app, it's very easy to prevent unoccupied rooms from being heated and ensure a comfortable temperature exactly where and when it's needed. What's more, the app allows for multiple gateways to be added. This way users can control the systems in their home as well as, for example, their holiday home or second residence, from a single app.

- Simple, intuitive app enabling easy cloud-based control
- In-app installation and diagnostics
- Offline mode allows access via the app even when there is no internet connection
- Centralised comfort control with a customisable dashboard
- Easy control of all linked products that can be grouped in different zones for optimal energy efficiency
- Permission management to easily share full or restricted access with other occupants or guests
- Practical notifications

Download the Unisenza Plus app:



UNISENZA PLUS CONTROLS RANGE	
Visual	Description
	Unisenza Plus Gateway The Unisenza Plus Gateway is the central unit for connecting Unisenza Plus devices to the cloud and an Internet router with a WiFi or Ethernet cable connection. It uses Zigbee 3.0 technology and connects up to 100 end devices.
	Unisenza Plus 2-Channel Receiver The Unisenza Plus Receiver RF with two separate channels can be used for a wireless control of boiler, pump and/or zone valves in an HVAC system. 230V connection. Relay on/off or open therm output.
	Unisenza Plus Electronic Thermostatic Head (ETH) Unisenza Plus Electronic Thermostatic Head with wireless communication function for controlling the thermostatic radiator valve in heating systems. Connection M30x1,5mm. Adapter for mounting on Danfos RA valves included.
	Unisenza Plus 2-Channel Thermostat The Unisenza Plus Thermostat RF is a wireless room thermostat with Zigbee 3.0. Two channels control outputs via Zigbee wireless communications.
	Unisenza Plus Thermostats Wired (230V & 24V) The Unisenza Plus Room Thermostats 230V and 24V are AC powered thermostats for hydronic and electric heating & cooling systems.
	Unisenza Plus Thermostat RF The Unisenza Plus Thermostat RF is a room thermostat with Zigbee 3.0 for the wireless communication with the Unisenza Plus Wiring Centre.
	Unisenza Plus Underfloor Heating Wiring Centre RF The Unisenza wiring centre works together with up to eight different Unisenza Plus Thermostats RF for hydronic radiant heating & cooling systems.
	Unisenza actuator Normally closed, power 1W, IP 54 in all mounting positions, with function indicator and snap lock, incl. adapter ring (adapter rings for other makes available on request). First Open function for easy initial installation. Versions 230V and 24V available.

A PURMO GROUP BRAND

Bulevardi 46
P.O. Box 115
FI-00121 Helsinki
Finland
www.purmogroup.com

Every care has been taken in the creation of this document. No part of this document may be reproduced without the express written consent of Purmo Group. Purmo Group accepts no responsibility for any inaccuracies or consequences arising from the use or misuse of the information contained herein.

